

# MONTHLY MEMBERSHIP PROGRESS REPORT

LOCATION NEBRASKA

District 38 N

Results as of: 2/28/2022

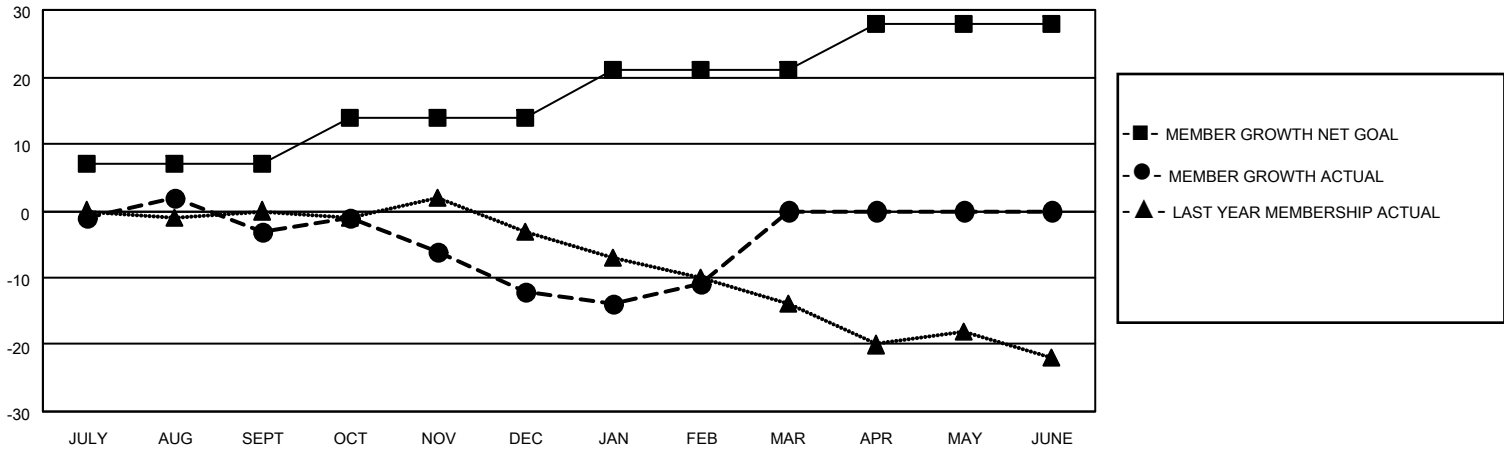
Clubs			
RESULTS FOR 2021-2022			
QUARTER	NEW CLUB GOAL	NEW CLUBS	DROPPED CLUBS
JULY/AUG/SEPT	0	0	0
OCT/NOV/DEC	0	0	0
JAN/FEB/MAR	1	0	0
APR/MAY/JUNE	0	0	0

Members			
RESULTS FOR 2021-2022			
QUARTER	MEMBER GROWTH NET GOAL	MEMBER GROWTH ACTUAL	DROPPED MEMBERS ACTUAL (including transfers)
JULY/AUG/SEPT	7	13	14
OCT/NOV/DEC	7	15	24
JAN/FEB/MAR	7	5	3
APR/MAY/JUNE	7	0	0

**GOALS AND ACTUAL NEW CLUBS CUMULATIVE**



**GOALS AND ACTUAL MEMBERS CUMULATIVE**



DROPPED CLUBS: 0	14 CLUBS OF 28 ADDED 1 OR MORE NEW MEMBERS	<u>GENDER DISTRIBUTION</u>
<u>DROPPED MEMBERS</u>		MALE 491 (71.16%)
DECEASED 11		FEMALE 199 (28.84%)
CLUB CANCELLED 0		NON BINARY 0 (0.00%)
OTHER 30		PREFER NOT TO ANSWER 0 (0.00%)
TOTAL 41	<a href="#">CLICK HERE FOR CUMULATIVE MEMBERSHIP DATA</a>	TOTAL FAMILY UNIT MEMBERS 123
		FAMILY MEMBERS PAYING HALF DUES 62